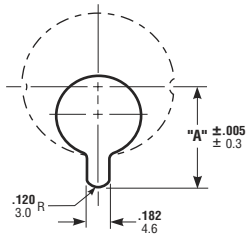


DIMENSIONS

INCHES
MILLIMETERS

Nominal, subject to tolerance extremes.

Dimensions of Cam to Operate:

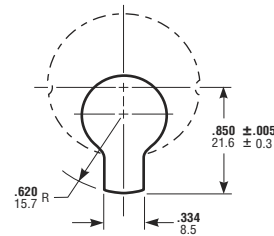


CYL. MAKE	DIM. "A"
ELKEM VING	.790
ACROLOK	20.1
ALL OTHERS	.800
	20.3

LOCK SERIES	}	1830	CAM NO.	ACROLOK.....	A9002	
		MS1837		ADAMS RITE.....	MS	
		MS1850S		ARROW.....	C182	
		MS1850SN		BEST.....	A5979	
		MS1860		MEDECO 10-100 OF 10-200.....	10-053A	
		MS1861		CORBIN.....	111F55	
		MS+1890		FALCON.....	9899	
		1870		GENERAL.....	B	
		1870HM		KABA 20/KV 07 XS.....	C103	
		1875		LIPS (EXIT DEVICE ONLY).....	8162	
LATCH SERIES	}	1877	LIPS-KESO (EXIT DEVICE ONLY).....	8182		
		4510	LOCKWOOD (ILCO).....	4002-2R		
		4710	MINI-KABA KV807XS-103.....	C8103		
		4720AN	MIWA MTO-29.....	S		
		4730	RUSSWIN 0-1/2 [1-1/8], 1 [1-1/4].....	111F55		
		EXIT DEVICES	}	8300	RUSSWIN "RECORE".....	362F42
				8400	SARGENT.....	47-40-101
				8650	SARGENT KESO.....	47-70-101
				Entry Trim	SCHLAGE (20-010 TO 20-017).....	B502-292
					WEISER.....	8999
	YALE 1152 Cyl., S1052H Turn.....			1161L		
	YALE 1154V Cyl., S1054H Turn.....			1161V		
	YALE 1155 Cyl., S1055 Turn.....			1166A		
	YALE 1194 Cyl.....			1160L		

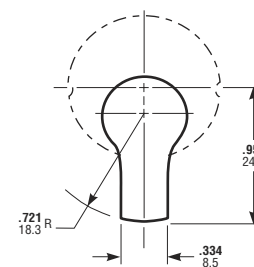
This Cam Available From:

Dimensions of Cam to Operate: 4070 Series Deadbolt

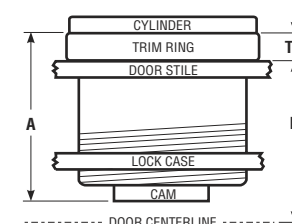


This cam available from above cylinder manufacturers on special order (or make from standard cam)

Dimensions of Cam to Operate: 2331 Deadbolt



This cam available from all cylinder manufacturers (standard cam)



Cylinder Trim Ring for Narrow Stiles

Narrow stile doors require a trim ring to fill the gap remaining between the cylinder shoulder and stile when a standard mortise cylinder is used. If the security of the hardened steel Adams Rite MS4043 Cylinder Guard is not required, this ring may be simply a length of 1.171 I.D. tubing. Its length varies depending on door thickness or cylinder make and number of pins. The specific length required can be quickly determined by the following formula:

FOR MS® LOCKS: $TR^* = A + .125 - B$

FOR 4500 SERIES LATCHES: $TR^* = A + .0312 - B$

"TR" is trim ring length.
"A" is cylinder height (less shoulder but including cam).
"B" is one-half of door thickness.

*TOLERANCE: ±.060



ADAMS RITE MANUFACTURING CO.

260 Santa Fe Street, Pomona, CA 91767
Phone: (909) 632-2300 Fax: (909) 632-2369

MS4036, 4066 Mortise Cylinder & Thumbturn