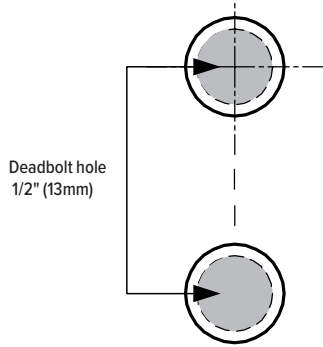
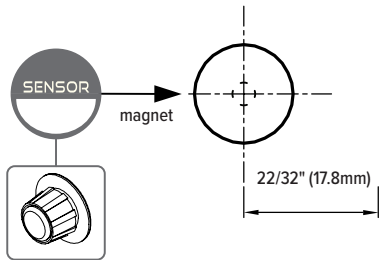


This side up (left hand door)



Install guide line for strike

CAUTION
Install at the same position between sensor (product) and magnet



* Insert the auto-lock magnetic.

CAUTION
In case of a Right hand handle, reverse this install guide line.

- Check to ensure the G100 Aperio unlocks and locks properly after installation.
- Be careful not to apply excessive force on the installed product.

This side up (right hand door)

Installation Procedure for Single Door

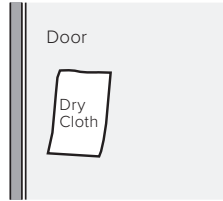
Installation Conditions

! If the door thickness is too thin, the product cannot be installed.

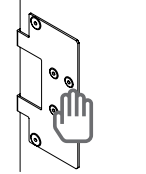
- The G100 Aperio® must be installed on a standard glass door 7/16" to 1/2" (11 to 13mm) thick
 - 15/32" (12mm) door thickness is recommended
- A 13/32" (10mm) door gasket is provided for installation on doors with thickness less than 7/16" (11 mm)

- Door gap range: 1/8" to 3/16" (2.5 to 5mm)
- Upside door deflection: 1/16" (2mm)
- If the gap between the doors is twisted more than 1/16" (1mm), the auto-lock feature may not function properly.

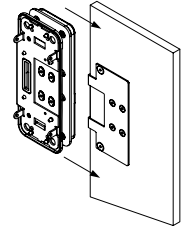
- 1** Clean the installation surface with a dry cloth or alcohol.



- 2** Remove the adhesive cover from the mounting plate and attach it to the door. This plate will be the mounting surface for the lock.



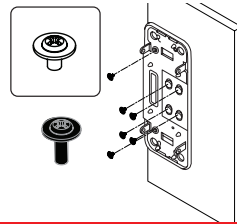
- 3** Install the front body by sliding it onto the mounting plate and aligning the six mounting screw holes. Position the front body in the middle of the PCB link on the mounting plate. Be careful to not brush or damage the rubber.



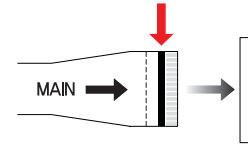
Ensure the installation surface is dry. If the installation surface is wet, the adhesive strength of the lock will weaken.

Once the plate is stuck to the door, it is very hard to remove. Ensure care is taken during the mounting procedure.

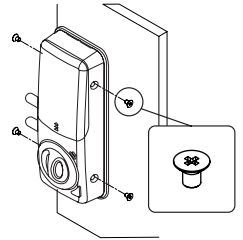
- 4** Using the six mounting screws, secure the front body to the mounting plate.



- 5** Electrically connect the front body firmly to the back body. Ensure the solid line on the PCB connector is no longer visible.



- 6** Using the four mounting screws, secure the back body to the front body.

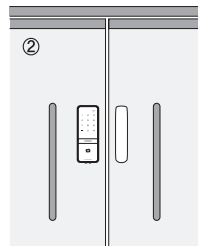


For thin doors less than 7/16" (11 mm) thick, use the 13/32" (10mm) door gasket and mount the front body using the 9/32" (7mm) black mounting screws.

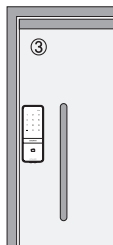
Left Hand Door Configuration (factory default setting)



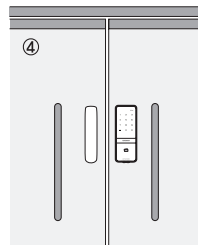
- 1** G100 Aperio position for left hand, single door (factory default)



- 2** Position of lock and strike for left hand, double doors (factory default)



- 3** G100 Aperio position for right hand, single door

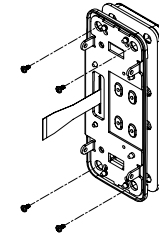


- 4** Position of lock and strike for right hand, double doors

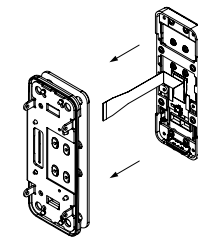
- For double doors, it is recommended that the strike side is stationary.
- The G100 Aperio is not recommended for double doors with finger-protecting rubber.

Right Hand Door Configuration

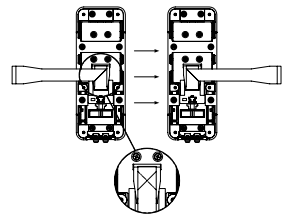
- 1** Remove screws to disassemble the front body



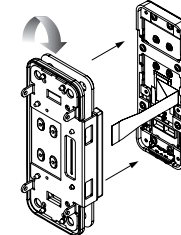
- 2** Separate the U-frame



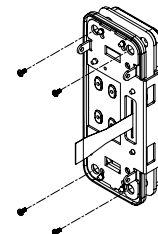
- 3** Change the direction of the PCB connector



- 4** Rotate and reposition the U-frame

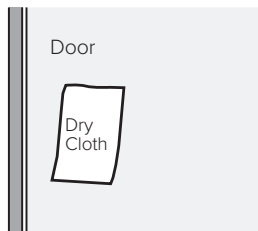


- 5** Reassemble the front body

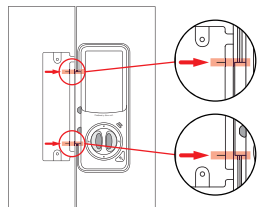


Installation Procedure for Double Doors

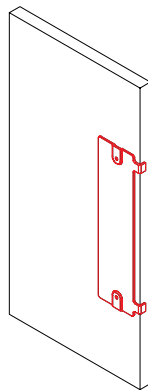
- 1 Clean the strike mounting surface with a dry cloth or alcohol.



- 2 Align the marking on the strike installation plate with the edge of the U-frame on the back body.



- 3 Remove the adhesive cover from the strike installation plate and attach it to the opposite door. This plate will be the mounting surface for the strike.

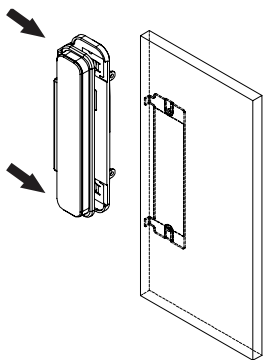


Ensure the mounting surface is dry. If the mounting surface is wet, the adhesive strength of the lock will weaken.

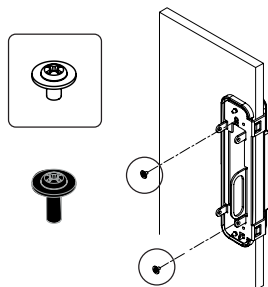
Good alignment is necessary for proper lock operation.

Once the plate is stuck to the door, it is very hard to remove. Ensure care is taken during the mounting procedure.

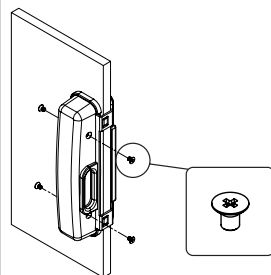
- 4 Install the strike by sliding it onto the mounting plate and aligning the two mounting screw holes.



- 5 Using the two mounting screws, secure the strike to the mounting plate.



- 6 Using the four mounting screws, secure the cover to the strike.



- Check to ensure the G100 Aperio unlocks and locks properly after installation.
- Be careful not to apply excessive force on the installed product.

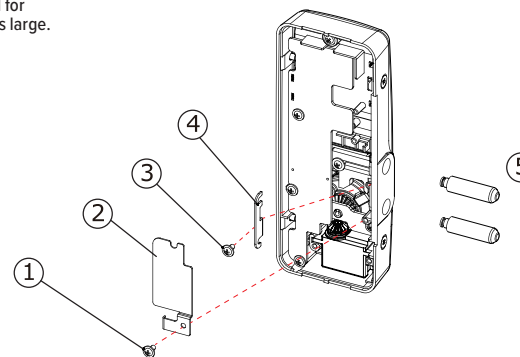
Be careful not to brush or damage the rubber.

For thin doors less than 7/16" (11 mm) thick, use the 13/32" (10mm) door gasket and mount the strike using the 9/32" (7mm) black mounting screws.

Large Door Gap Configuration

Deadbolt extensions may be used for applications where the door gap is large.

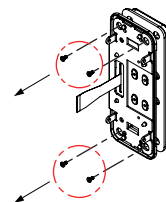
1. Loosen screw
2. Remove bracket
3. Loosen screw
4. Remove bracket
5. Replace deadbolts



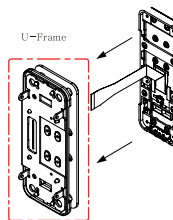
Thin Door Configuration

Front Body

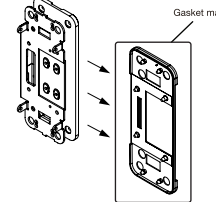
- 1 Remove the four screws to disassemble the front body.



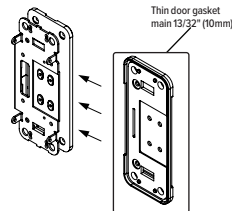
- 2 Separate the U-frame from the front body.



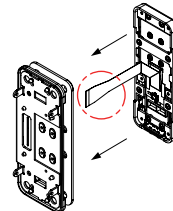
- 3 Remove the main gasket which was assembled in the U-frame.



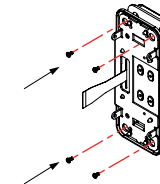
- 4 Reassemble the 13/32" (10mm) door gasket with the U-frame.



- 5 Reposition the front body and the U-frame. Ensure the PCB connector is not twisted.

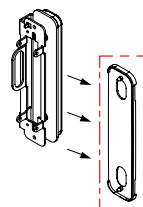


- 6 Install the four screws to reassemble the front body.

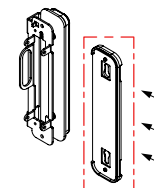


Strike

- 1 Remove the main gasket which was assembled in the strike.



- 2 Reassemble the 13/32" (10mm) door gasket with the strike.



BACK OF TEMPLATE