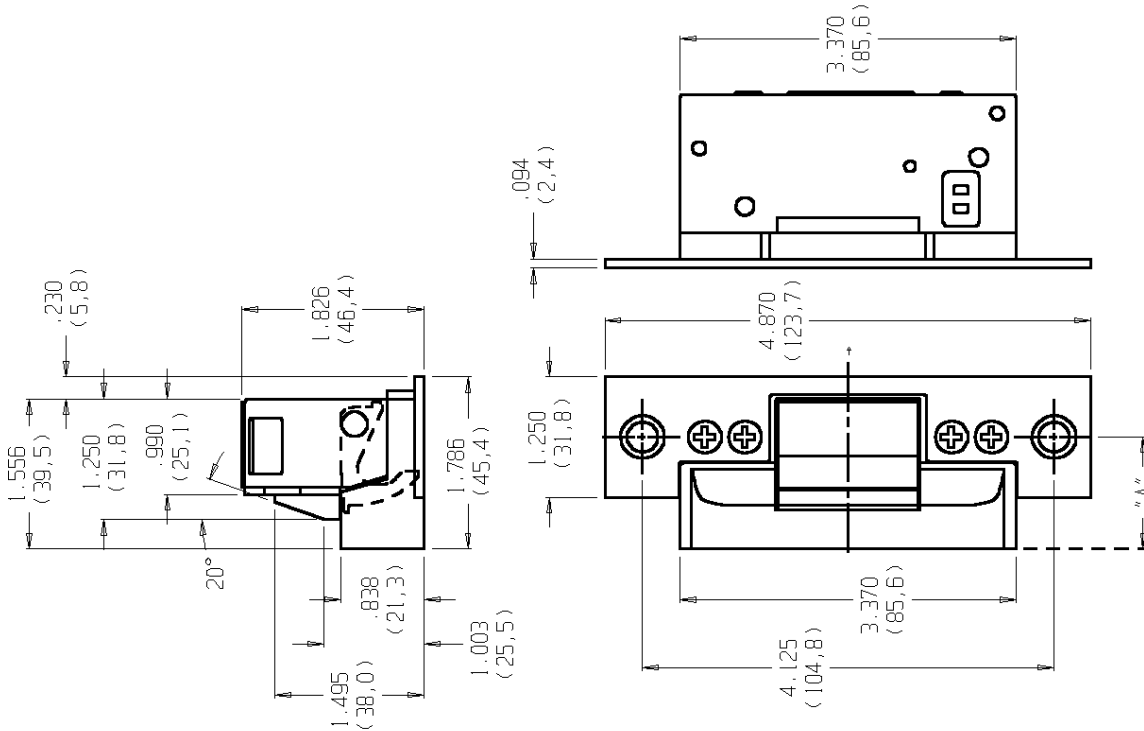


ELECTRIC STRIKE DIMENSIONS

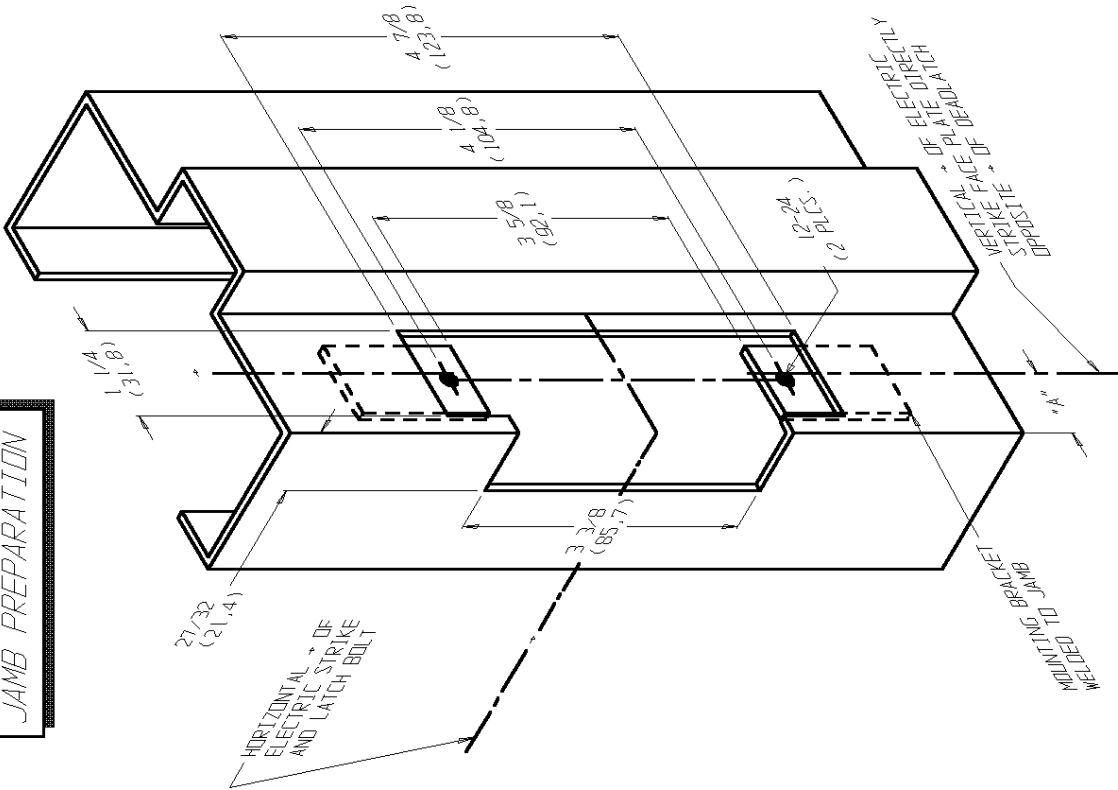


- NOTE:
1. WHEN DOOR SILENCERS ARE USED ON FRAMES, ADJUST STRIKE LOCATION TO ENSURE COMMON LATCH AND STRIKE CENTERLINES.
 2. STANDARD UNIT FITS DIM. "A" UP TO 1 1/16" (SEE DASH NO.)
 3. 7270-UL108, 3HRS - FAIL SECURE ONLY.

ADAMS RITE MANUFACTURING COMPANY
POMONA, CA. 91767

7170/7270 ELECTRIC STRIKE
FOR METAL JAMB WITH
MORTISE LATCHES

JAMB PREPARATION



FOR EXTENDED LIP: (DIM "A" DOOR → TO JAMB EDGE)

DASH NO.	DIM "A"	DASH NO.	DIM "A"	DASH NO.	DIM "A"
NONE	1.06	-05	2.00	-10	2.63
-01	1.50	-06	2.13	-11	2.75
-02	1.63	-07	2.25	-12	2.88
-03	1.75	-08	2.38	-13	3.00
-04	1.88	-09	2.50		

REF. INSTRUCTION SHEET NO.:

80-0180-367

ECN NO.

9629

TEMPLATE NO.:

52140-1

DATE:

06-25-97